

# BL040401

## 4" x 4" Surface Mount LED Back Light

- Aii** Extremely consistent light over the entire active area of illumination.
- Aii** Integrated M6 nut channel for easy mounting.

### Ordering Information

Standard Product:  
Shipped Next Day

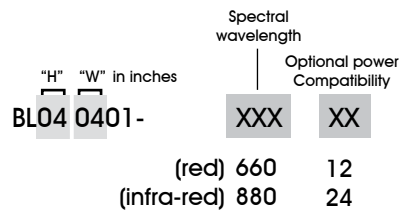
**BL040401-660**

Configured for use with  
Aii power supply

**BL040401-66024**

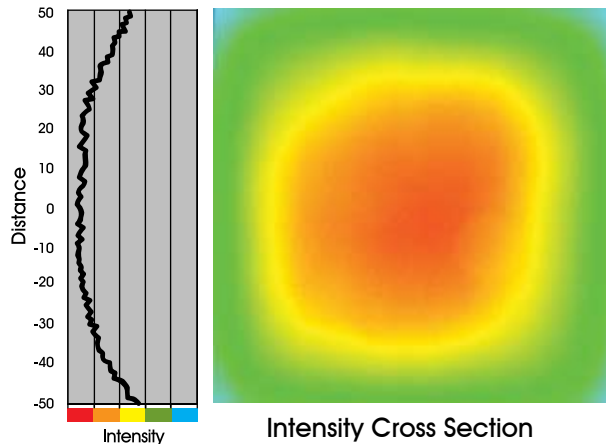
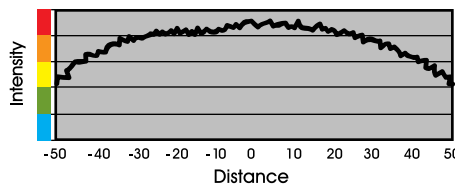
Configured for use with user  
supplied 24v DC Power Supply

Standard Product Variation:  
Shipped Within Two Weeks

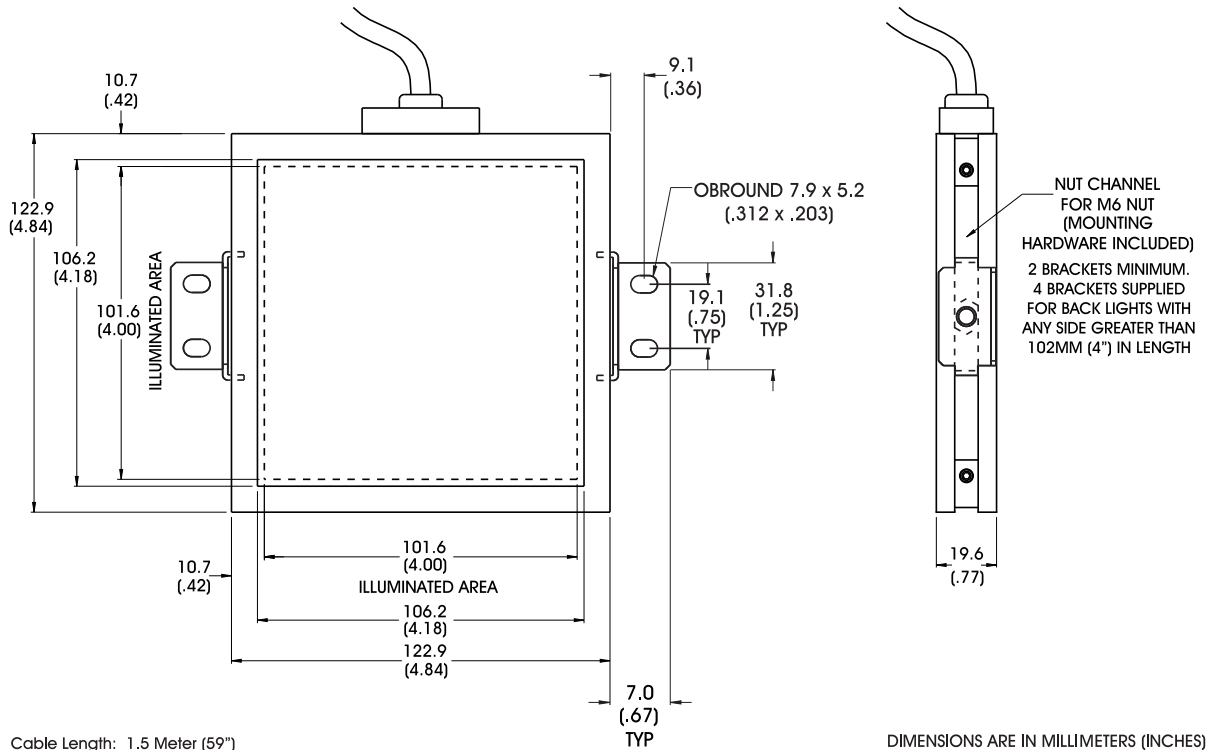


### Light Consistency Information

Intensity Distribution



## Dimensional Information



### Standard Variation Current Specifications

	blue	green	yellow	orange	red	infra-red	white	RGB	
@12	N/A	N/A	N/A	N/A	960	960	N/A	N/A	mA
@24	N/A	N/A	N/A	N/A	480	480	N/A	N/A	mA
Ai	N/A	N/A	N/A	N/A	480	480	N/A	N/A	mA

### General Specifications

Weight:	454 g (1lb)
Finish:	Black Anodized
Operating Temperature:	0-60°C
Meets Specifications:	CE, RoHS

### Standard Product Information

Red	Max. Illumination	Irradiance (mW/cm <sup>2</sup> )
	@ Source	1.5
	Working Distance: 75mm	.4
	Lifetime	50,000 hrs

### Additional Information

**CAUTION:** This light requires mounting in such a way as to facilitate proper heat sinking, which will help ensure long life and stable operation. *Due to the potential of high surface temperatures, care must be exercised when installing or adjusting the product while energized.*

Various methods for effective heat transfer can be used, including:

Ensuring that the entire backside of the light is in contact with a heat sinking thermal mass

Using external fans placed in the proximity of the light to ensure air flow over the backside of the light

Operating light at reduced input voltage when applicable

*For additional information on thermal mounting techniques, contact Ai.*

802.767.3830