

SPECIFICATIONS

PRODUCT SPECIFICATIONS



**DIGITAL CMOS AREA SCAN
CAMERA LINK™ OUTPUT
COLOR OR MONOCHROME
UP TO 500 FPS AT 1.3 MEGAPIXELS**

BASLER A500 SERIES

Features/Benefits

- Superior image quality improves your image processing results
- Compact size reduces the space needed in your installation
- 100% factory testing ensures consistent product quality
- LED indicators and test image generation capability reduce your integration time and aid troubleshooting
- Area of Interest (AOI) scanning allows higher frame rates
- Windows® setup tool lets you configure your camera with ease
- Electronic exposure time control provides maximum flexibility

Description

The A500 Series of high-performance, digital cameras is ideal for industrial users who require the exceptionally high frame rates offered by CMOS technology. The cameras can be triggered via an external sync signal or run in an internally controlled "free-run" mode. A500 cameras operate with a single voltage power supply and have the advantages of the remarkably simple cabling requirements outlined in the Camera Link standard. A combination of features such as digital shift, test images, and indicator LEDs, ensure that these versatile cameras provide an exceptional price/performance ratio.

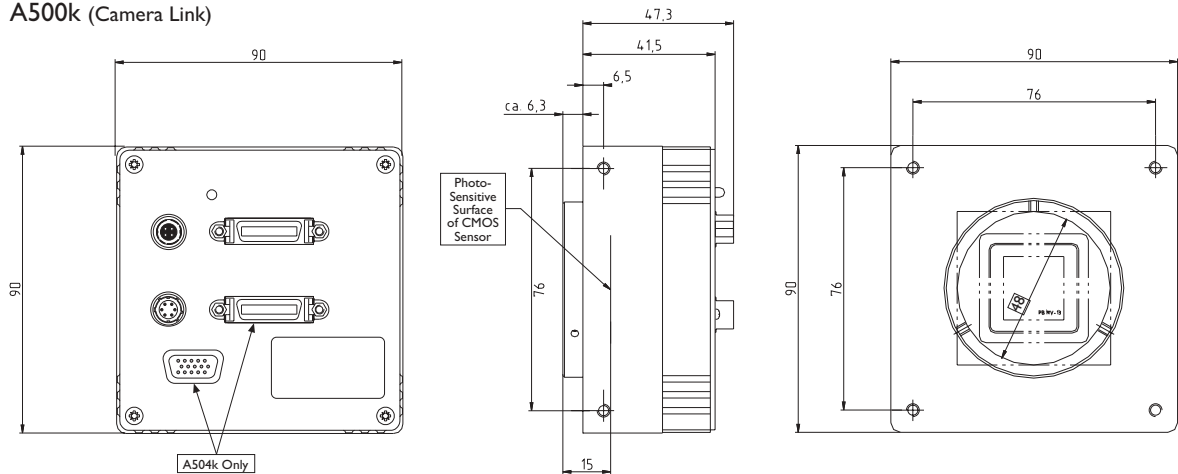
Applications

- Dynamic motion inspection
- 3-D holographic data storage
- Human motion analysis
- Digital archiving
- Manufacturing quality control
- Many other vision applications

BASLER
VISION TECHNOLOGIES

Dimensions (in mm)

A500k (Camera Link)



Specifications	A501k/kc	A504k/kc
Sensor Size (H x V Pixels)	1280 X 1024	
Sensor Type	Progressive Scan CMOS	
Pixel Size	12.0 µm x 12.0 µm	
Pixel Clock	50 MHz	67 MHz
Max. Frame Rate at Full Resolution	74 frames/s	500 frames/s
Color / Mono	Color or Mono	Color or Mono
Video Output Type	Camera Link (Base)*	Camera Link (Full)**
Video Output Format	2 taps, 8 bits each	10 taps, 8 bits each
Synchronization	Via external trigger or free-run	
Exposure Control	Edge-controlled, level-controlled, or programmable	
Power Requirements	12VDC (±10%) max. 3.0W	12VDC (±10%) max. 6.0W
Lens Mount	F-mount	
Housing Size (L x W x H)	41.5 mm x 90 mm x 90 mm	
Weight	max. 600 g	max. 610 g
Conformity	CE, Fcc	

Specifications are subject to change without prior notice.

*The output is RS-644 LVDS when this camera is used with an optional Basler Interface Converter (BIC)

**The 10 tap, 8bit format is a proposed addition to the Camera Link standard

BASLER
VISION TECHNOLOGIES

Germany, Headquarters
Phone +49 4102 463 500
Fax +49 4102 463 599
vc.sales.europe@baslerweb.com

USA
Phone +1 610 280 0171
Fax +1 610 280 7608
vc.sales.usa@baslerweb.com

Singapore
Phone +65 6425 0472
Fax +65 6425 0473
vc.sales.asia@baslerweb.com

www.basler-vc.com