

# Piranha2 P2-2x-xxx40 (10 $\mu\text{m}$ )

Line Scan Cameras



## Key Features

- 80 MHz throughput
- 10  $\mu\text{m}$  pixels
- Resolutions from 1k to 4k
- High responsivity
- Base Camera Link™
- Single 12 V to 15 V power supply
- Compact design

## Programmability

- Programmable pixel to pixel correction
- Adjustable analog and digital gain and offset
- 8 or 10 bit output
- Adjustable integration time and line rate
- Test pattern, line statistics, and camera diagnostics

## Typical Applications

- Printed circuit board inspection
- High performance document scanning/image lift
- Postal/parcel sorting
- Flat panel display inspection
- General machine vision

## Overview

Base Camera Link, 10  $\mu\text{m}$  pixels and resolution up to 4k with proven performance.

Piranha2 delivers superb performance with a wide selection of resolutions. Base Camera Link with two 8 or 10 bit outputs at 40 MHz deliver 80 MHz throughput, and boosted responsivity means the Piranha2 needs less light. Our 10  $\mu\text{m}$  models are available in resolutions from 1k to 4k.

The camera is small, light, and uses a single power supply. The compact design is shallow and small. Cabling interfaces are simplified with the Base Camera Link™ high-speed serial standard. The camera is very sensitive, but still provides quieter, more uniform output thanks to CDS (correlated double sampling) and embedded flat-field correction algorithms. Gain and offset are fully programmable for each output channel, and the camera can output test patterns for cable/system troubleshooting. All resolutions provide appropriate, readily-available standard lens options (C mount, F mount, and M72 x 0.75).

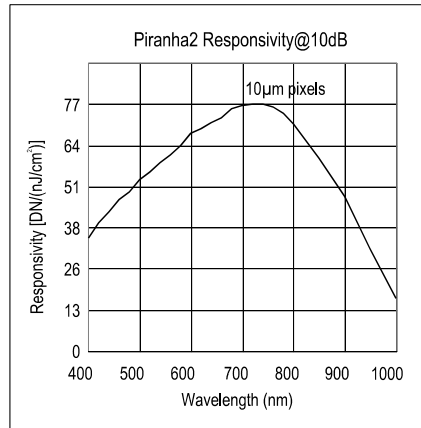
## Specifications

Resolution	1024 / 2048 / 4096
Data Rate	2 x 40 MHz
Max. Line/Frame Rate	65 / 35 / 18 kHz
Pixel Size	10 $\mu\text{m}$
Data Format	8, 10 bit
Output	Base Camera Link
Lens Mount	M72 x 0.75, C, F mount
Responsivity	76 DN/(nJ/cm <sup>2</sup> ) @ 10 dB
Dynamic Range	54 dB
Nominal Gain Range	$\pm 10$ dB
Size	50 x 85 x 50 / 85 x 85 x 53.7 mm
Mass	<450 g
Operating Temp	10 °C to 50 °C
Power Supply	12 V to 15 V
Power Dissipation	<9 W
Regulatory Compliance	CE
Control	MDR26 Camera Link
Data	Shared with Control
Power	Hirose HR10 6 pin
Example Part Number	P2-22-04K40

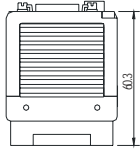
# Piranha2 P2-2x-xxx40 (10 μm)

## Line Scan Cameras

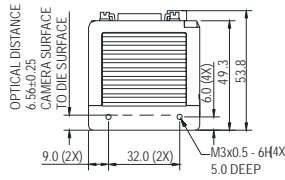
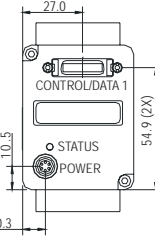
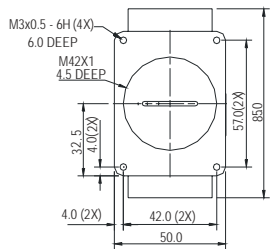
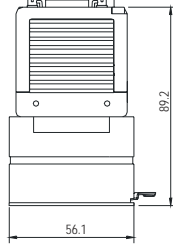
*With established performance and wide customer base, the Piranha2 is the camera generation known to have brought line scan performance to the next level.*



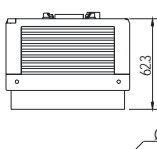
1k/2k, 10 μm 2 TAP WITH C-MOUNT



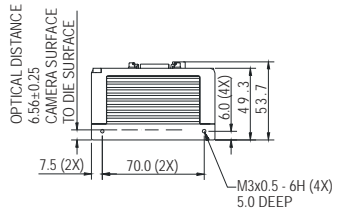
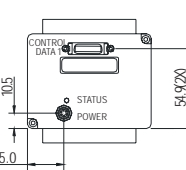
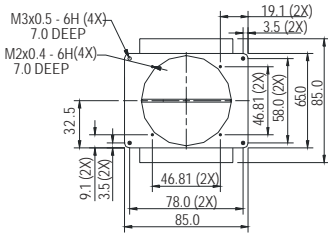
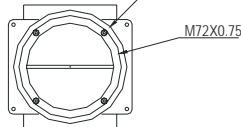
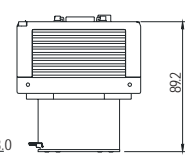
1k/2k, 10 μm 2 TAP WITH F-MOUNT



4K 10 μm 2 TAP WITH LARGE FORMAT ADAPTER



4K 10 μm 2 TAP WITH F MOUNT



All units in mm.

